

Mark Anthony

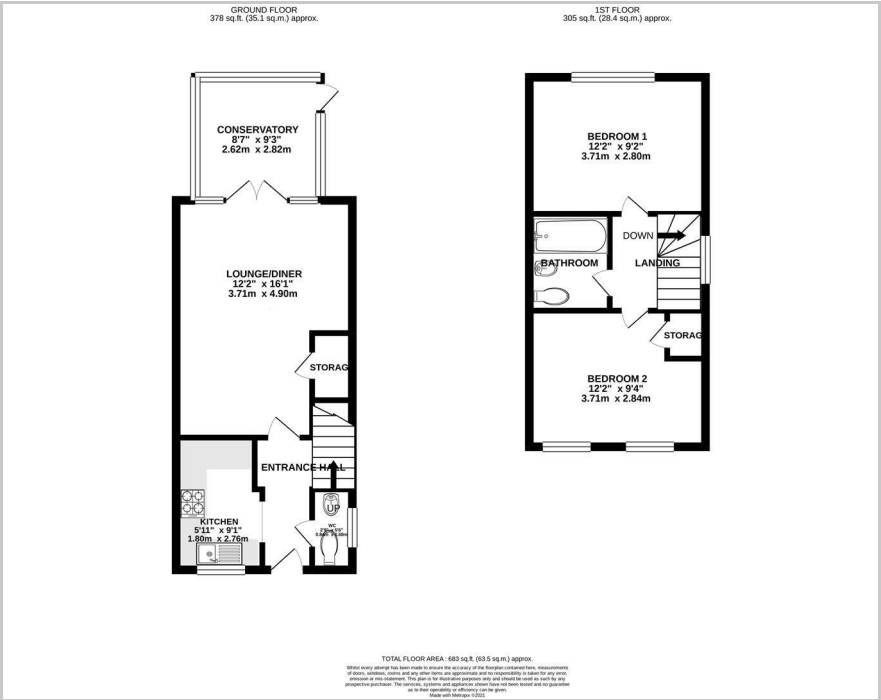
Estate Agents

41 Primrose Walk, Epsom, KT17 2EZ

£475,000



Floor Plan



Area Map



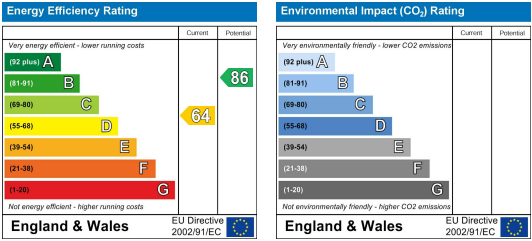
Accommodation

- Modern end of terrace home
- Two double bedrooms
- Modernised by the current owner
- Situated on the edge of Ewell Village
- Modern fitted kitchen with integrated appliances
- Refitted fully tiled modern bathroom & downstairs W.C
- Lounge diner and double glazed conservatory
- Enclosed rear garden
- Allocated parking for two cars
- Epc Rating D

Viewing

Please contact our Ewell Village Office on 02083937275 if you wish to arrange a viewing appointment for this property or require further information.

Energy Efficiency Graph



These particulars, whilst believed to be accurate are set out as a general outline only for guidance and do not constitute any part of an offer or contract. Intending purchasers should not rely on them as statements of representation of fact, but must satisfy themselves by inspection or otherwise as to their accuracy. No person in this firm's employment has the authority to make or give any representation or warranty in respect of the property.